

CORRECTION

Open Access

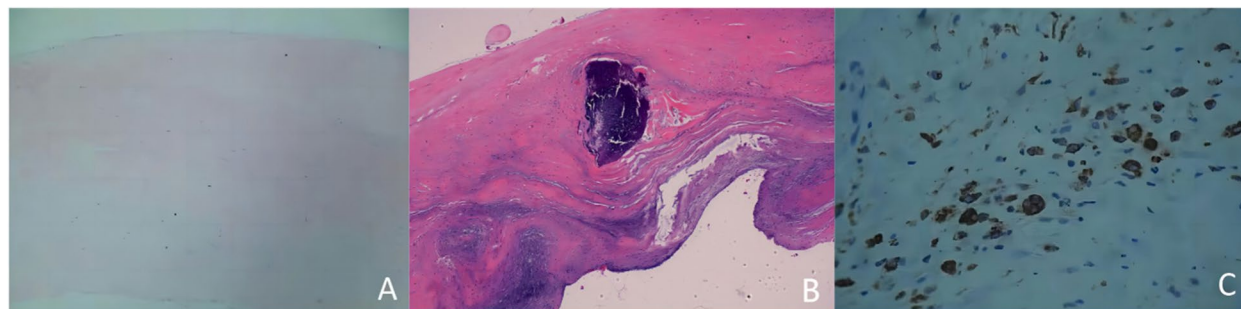


# Correction: Impact of Fetuin-A, Lp(a), matrix gla protein and macrophage density on calcific aortic valve disease: a clinical study

Cong Liu<sup>1,2,3</sup>, Haifeng Liu<sup>4</sup> and Ting Xie<sup>5\*</sup>

**Correction:** *Lipids in Health and Disease* 21, 14 (2022)  
<https://doi.org/10.1186/s12944-022-01625-x>

Following publication of the original article [1], the author requested to replace Fig. 1. The correct figure is given below.



**Fig. 1** Results of valve visual observation by HE staining and CD68 immunohistochemical staining; **(A)**: normal aortic valve (HE,  $\times 40$ ), composed of collagen layers, loose layers, and ventricular layers, collagen layer (mainly composed of collagen), intermediate loose layer (containing a small amount of collagen), and ventricular layer (mainly composed of elastic fibers); **(B)**: Calcific aortic valve (HE,  $\times 40$ ), visible calcification; **(C)**: Calcific aortic valve (IHC,  $\times 100$ ), CD68 positive macrophage

The original article [1] has been updated.

The online version of the original article can be found at <https://doi.org/10.1186/s12944-022-01625-x>.

\*Correspondence:

Ting Xie  
xiejinghang2014@sina.com

<sup>1</sup> Department of Ultrasound Medicine, Union Hospital, Tongji Medical College, Huazhong University of Science and Technology, Wuhan 430022, China

<sup>2</sup> Clinical Research Center for Medical Imaging in Hubei Province, Wuhan 430022, China

<sup>3</sup> Hubei Province Key Laboratory of Molecular Imaging, Wuhan 430022, China

<sup>4</sup> Department of Medical Engineering, Tongji Medical College, Union Hospital, Huazhong University of Science and Technology, Wuhan 430022, China

<sup>5</sup> Department of Cardiac Surgery, Hainan General Hospital, No.19 Xiuhua Road, Xiuying District, Haikou 571000, China



© The Author(s) 2023. **Open Access** This article is licensed under a Creative Commons Attribution 4.0 International License, which permits use, sharing, adaptation, distribution and reproduction in any medium or format, as long as you give appropriate credit to the original author(s) and the source, provide a link to the Creative Commons licence, and indicate if changes were made. The images or other third party material in this article are included in the article's Creative Commons licence, unless indicated otherwise in a credit line to the material. If material is not included in the article's Creative Commons licence and your intended use is not permitted by statutory regulation or exceeds the permitted use, you will need to obtain permission directly from the copyright holder. To view a copy of this licence, visit <http://creativecommons.org/licenses/by/4.0/>. The Creative Commons Public Domain Dedication waiver (<http://creativecommons.org/publicdomain/zero/1.0/>) applies to the data made available in this article, unless otherwise stated in a credit line to the data.

Published online: 28 April 2023

#### References

1. Liu C, Liu H, Xie T. Impact of Fetuin-A, Lp(a), matrix gla protein and macrophage density on calcific aortic valve disease: a clinical study. *Lipids Health Dis.* 2022;21:14. <https://doi.org/10.1186/s12944-022-01625-x>.

**Ready to submit your research? Choose BMC and benefit from:**

- fast, convenient online submission
- thorough peer review by experienced researchers in your field
- rapid publication on acceptance
- support for research data, including large and complex data types
- gold Open Access which fosters wider collaboration and increased citations
- maximum visibility for your research: over 100M website views per year

**At BMC, research is always in progress.**

Learn more [biomedcentral.com/submissions](https://biomedcentral.com/submissions)

